



# BORDER HEALTH NEWSLETTER

April 2024

## NAU MAI, HAERE MAI - WELCOME!

Kia ora koutou katoa,

This month has been particularly busy for all of us involved in the mosquito world, especially those inhabiting Auckland, due to the live mosquitoes arriving onboard aeroplanes coming from Shanghai. We very much appreciate everyone's efforts and support!

World Malaria Day 25 April: This year was marked under the theme "Accelerating the fight against malaria for a more equitable world". WHO joins the RBM Partnership to End Malaria and other partners in highlighting barriers to health equity, gender equality and human rights in malaria responses worldwide – as well as concrete measures to overcome them. [Learn more about the 2024 malaria day here.](#)

Mosquito numbers for this month together with the answers to the riddle for the best mosquito photo of the months we portrayed last month are below. Have fun!

Happy reading!

## SURVEILLANCE

During April a total of 1275 routine surveillance, enhanced surveillance, and various survey samples were collected by staff from 12 PHUs (Figure 1). The samples included 169 positive larval samples and 123 positive adult samples, leading to a total of 5490 larvae and 538 adults identified over the past month (Table 1).

*Culex quinquefasciatus* is the dominant larval species this month, which is the same as this month last year and the previous month (Table 1).

Compared to this same month last year, the total number of larvae has shown an increase (21%) while adult numbers have shown a decrease (88%) (Table 1).

Compared to the previous month, the total number of larvae and adults has shown a decrease (70% and 39% respectively).

**Table 1.** Adult and larvae sampled by the New Zealand surveillance program during April 2023 & 2024

Species (common name)	Adults		Larvae	
	Apr 24	Apr 23	Apr 24	Apr 23
<i>Aedes antipodeus</i> (winter mosquito)	-	30	-	37
<i>Ae notoscriptus</i> (striped mosquito)	4	195	1351	1161
<i>Coquillettidia iracunda</i> (no common name)	-	4	-	-
<i>Culex asteliae</i> (no common name)	-	3	-	36
<i>Cx pervigilans</i> (vigilant mosquito)	5	734	236	746
<i>Cx quinquefasciatus</i> (southern house mosquito)	507	724	3878	1228



## BORDER HEALTH NEWSLETTER

<i>Culex</i> sp.	22	29	-	-
<i>Culiseta tonnoiri</i> (no common name)	-	7	-	-
<i>Opifex fuscus</i> (rock pool mosquito)	-	-	25	29
<b>Total</b>	<b>538</b>	<b>1726</b>	<b>5490</b>	<b>3237</b>

The highest number of larvae sampled this month was obtained in Northland (1490 larvae) followed by Bay of plenty (1019 larvae) (Figure 1).

In total, four mosquito species have been collected this month (Table 1), two less than collected last month.

### INCURSIONS AND INTERCEPTIONS

During April, HPOs responded to six suspected interceptions, including, two of unwanted mosquito species (show in red), one *Culex quinquefasciatus* of likely exotic origin (shown in purple), two mosquitoes of local origin and one non-mosquito (Table 2).

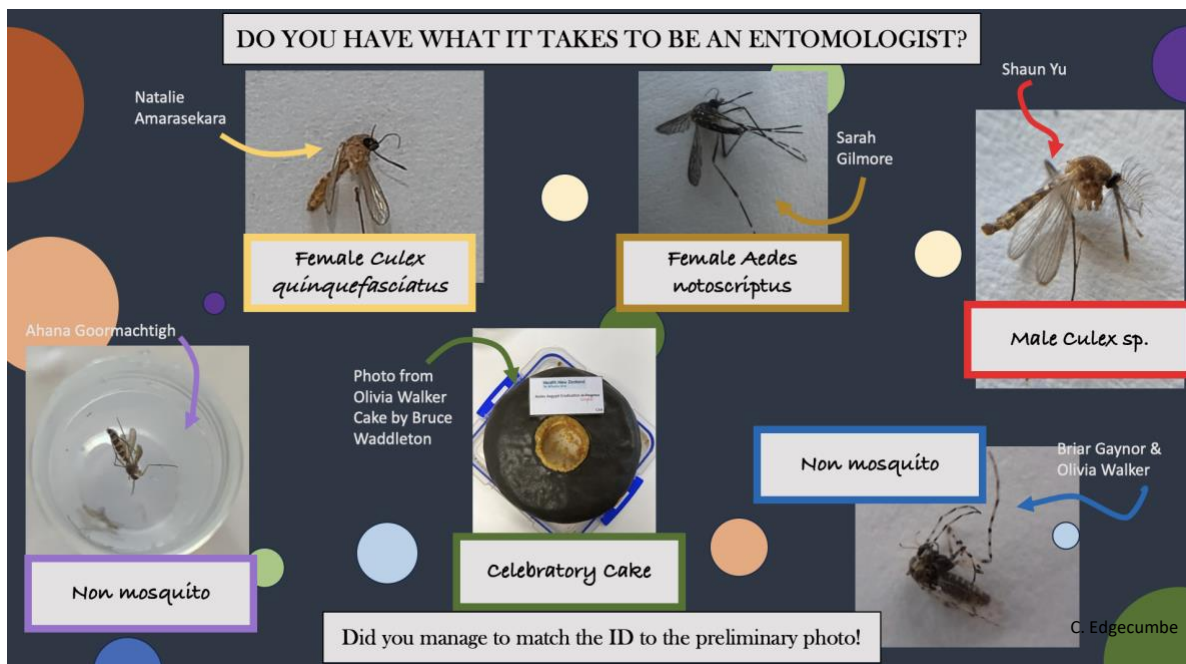
Table 2. Suspected interception during April 2024

Date	Species	Location	Circumstances
09.04.2024	1 female <i>Culex quinquefasciatus</i>	Christchurch International Airport	Found alive by MPI officer on his work station screen in the MPI area arside international arrival at CIAL.
11.04.2024	1 male <i>Culex quinquefasciatus</i>	Mainfreight Air & Ocean, 40 Ron Guthrey Road, Christchurch	Found dead by MPI while inspecting a shrink wrapped pellet of herbs, spices and leaves from Australia
11.04.2024	1 non-mosquito (Mycetophilidae)	9 Manu Street Otahuhu, Auckland	Found dead on a spiderweb on a pallet in a container of cosmetic products from France. Container departed from Le Havre on 23/3/24 and stopped in Tauranga before arriving in the TF.
16.04.2024	1 male <i>Culex quinquefasciatus</i>	Christchurch International Airport	Found alive in the immigration offices at CIAL, around the area that passengers bags are screened and would be searched if necessary.
11.04.2024	1 non-mosquito (Mycetophilidae)	9 Manu Street Otahuhu, Auckland	Found dead on a spiderweb on a pallet in a container of cosmetic products from France. Container departed from Le Havre on 23/3/24 and stopped in Tauranga before arriving in the TF.
11.04.2024	1 female <i>Culex pipiens pallens/molestus</i>	Auckland International Airport	Found in routine surveillance sample. BG7
15.04.2024	1 female <i>Culex pipiens pallens/molestus</i>	Auckland International Airport	Found in routine surveillance sample. BG7
21.04.2024	1 female <i>Culex pipiens pallens/molestus</i>	Auckland International Airport	Fond alive by MPI officer near the x-ray inspection area.
21.04.2024	1 male, 3 females <i>Culex pipiens pallens/molestus</i> 1 male <i>Culex quinquefasciatus</i>	Auckland International Airport	Fond alive by MPI officer near the x-ray inspection area.
21.04.2024	1 female <i>Culex pipiens pallens/molestus</i>	Auckland International Airport	Found in routine surveillance sample. BG8



## BORDER HEALTH NEWSLETTER

### BEST MOSQUITO PHOTOS OF THE MONTH - ANSWERS



### RISK MAPS

[Dengue Map](#) – Centres for Disease Control and Prevention

[Zika Map](#) – Centres for Disease Control and Prevention

[Malaria](#) – Centres for Disease Control and Prevention

[Malaria](#) – World Health Organisation

### DISEASE OUTBREAKS

To find out where the latest disease outbreaks have occurred visit:

[Epidemic and emerging disease alerts in the Pacific region](#) - Produced by the Pacific Community (SPC) for the Pacific Public Health Surveillance Network (PPHSN).

[Disease Outbreak News](#) - World Health Organization.

[Public Health Surveillance](#) - Institute of Environmental Science and Research (ESR) - Information for New Zealand Public Health Action.

[Communicable disease threats report](#) - European Centre for Disease Prevention and Control